

ENGINE	STD	OPT
Cummins QSM11-C	●	
HYDRAULIC SYSTEM	STD	OPT
Intelligent Power Control (IPC)		
3-power mode, 2-work mode, user mode	●	
Variable power control	●	
Pump flow control	●	
Attachment mode flow control		●
Engine auto idle	●	
Engine auto shutdown control		●
CAB & INTERIOR	STD	OPT
ISO Standard Cabin		
Rise-up type windshield wiper	●	
Radio / USB player	●	
Handsfree mobile phone system with USB	●	
12 V power outlet (24 V DC to 12 V DC converter)	●	
Electric horn	●	
All-weather steel cab with 360° visibility	●	
Safety glass windows	●	
Sliding fold-in front window	●	
Sliding side window (LH)	●	
Lockable door	●	
Hot & Cool box	●	
Storage compartment & Ashtray	●	
Sun visor	●	
Door and cab locks, one key	●	
Pilot-operated slidable joystick	●	
Cabin lights		●
Cabin front window rain guard		●
Cabin roof-steel cover	●	
Automatic Climate Control		
Air conditioner & Heater	●	
Defroster	●	
Starting aid(air grid heater) for cold weather	●	
Centralized Monitoring		
8" LCD display - Normal type	●	
8" LCD display - Premium type		●
Engine speed or trip meter / Accel	●	
Engine coolant temperature gauge	●	
Max power	●	
Low speed / High speed	●	
Auto idle	●	
Overload	●	
Check engine	●	
Air cleaner clogging	●	
Indicators	●	
ECO gauges	●	
Fuel level gauge	●	
Hyd. oil temperature gauge	●	
Fuel warmer	●	
Warnings	●	
Communication error	●	
Low battery	●	
Clock	●	
Seat		
Mechanical suspension without heater	●	
Mechanical suspension with heater		●
Adjustable air suspension without heater		●
Adjustable air suspension with heater		●
Cabin FOG		
FOG (Falling object guard)	Front & Tops guard	●
ISO/DIS 10262 Level 2	Tops guard	●

SAFETY	STD	OPT
Battery master switch	●	
Rearview camera		●
AAVM (Advanced around view monitoring)		●
Six front working lights (4 boom mounted, 2 front frame mounted)	●	
Travel alarm	●	
Rear work lamp		●
Beacon lamp		●
Automatic swing brake	●	
Boom holding system	●	
Arm holding system	●	
Safety lock valve for boom cylinder with overload warning device		●
Safety lock valve for arm cylinder		●
Swing lock system		●
Two outside rearview mirror	●	

OTHER

OTHER	STD	OPT
Booms		
6.55 m, 21' 6"		●
7.06 m, 23' 2"	●	
Arms		
2.4 m, 7' 10"		●
2.9 m, 9' 6"		●
3.38 m, 11' 1"	●	
4.0 m, 13' 1"		●
6.0 m, 19' 8"		●
Removable clean-out dust net for cooler	●	
Removable washer tank	●	
Fuel pre-filter with fuel warmer	●	
Rain cap	●	
Pre-cleaner		●
Self-diagnostics system	●	
Hi-mate (Remote management system)		●
Batteries (2 × 12 V × 200 AH)	●	
Fuel filler pump (50 l/min)		●
Lover wiper motor		●
Single-acting piping kit (Breaker, etc.)		●
Double-acting piping kit (Clamshell, etc.)		●
Quick coupler piping		●
Quick coupler		●
Accumulator for lowering work equipment		●
Pattern change valve (2 patterns)		●
General type guardrail		●
Tool kit		●

UNDERCARRIAGE

UNDERCARRIAGE	STD	OPT
Lower frame under cover (Additional)		●
Lower frame under cover (Normal)	●	
Track Shoes		
Triple grousers shoes (600 mm, 24")	●	
Triple grousers shoe (700 mm, 28")		●
Triple grousers shoe (800 mm, 32")		●
Track rail guard	●	
Full track rail guard		●
3-piece type track rail guard		●

* Standard and optional equipment may vary. Contact your hyundai dealer for more information. The machine may vary according to international standards.
 * The photos may include attachments and optional equipment that are not available in your area.
 * Materials and specifications are subject to change without advance notice.
 * All imperial measurements rounded off to the nearest pound or inch.



MOVING YOU FURTHER

HX520SL

With Tier 2 / Stage II Engine Installed

*Photo may include optional equipment

HYUNDAI CONSTRUCTION EQUIPMENT

Head Office (Sales Office)
 3F, BUNDANG FIRST TOWER, 55 BUNDANG-RO, BUNDANG-GU, SEONGNAM-SI, GYEONGGI-DO, 13591, KOREA

PLEASE CONTACT
 THE OFFICIAL DEALER OF HYUNDAI
 «TYAZHPROMINVEST» (TPI, LLC)
 105082 MOSCOW STREET B.POCHTOVAYA D.26/1 OFF.605
 +7 (495) 782-73-79
 +7 (800) 550-73-35
 WWW.T-P-I.RU
 HYUNDAI-MSK@T-P-I.RU
 www.hyundai-ce.com

2019. 12 Rev.3

Net Power SAE J1349 / 330 HP (246 kW) at 2,000 rpm	Gross Power SAE J1995 / 335 HP (250 kW) at 2,000 rpm	Travel Speed 5.0 km/hr (3.1 mph) / 3.2 km/hr (1.98 mph)	Operating Weight 51,175 kg / 112,820 lb
--	--	---	---



RULE THE GROUND

The HX Series exceeds customer's expectation!
Become a true leader on the ground with HCE's HX Series.

HX520S L



WORK MAX, WORTH MAX

- New Variable Power Control
- Fuel Rate Information
- Attachment Flow Control (Option)
- ECO Gauge
- New Cooling System with Increased Air Flow
- Enlarged Air Inlet with Grill Cover
- Cycle Time Improvement



MORE RELIABLE, MORE SUSTAINABLE

- Durable Cooling Module
- Reinforced Pin, Bush, and Polymer Shim
- Almost Doubled Durability of the Attachments
- Wear Resistant Cover Plate
- Hi-grade (High-pressure) Hoses



INFOTAINMENT FRONTIER

- New Front Side Air-Conditioning Systems
- Intelligent and Wide Cluster
- New Air Conditioning System
- Wi-Fi Direct with Smart Phone (Miracast) (Option)
- Quick Coupler Button (Option)
- New Audio System
- Front Side Air-Vent



MODERN COMFORT, SIMPLE AND SAFE SOLUTION

- AAVM (Advanced Around View Monitoring) Camera System (Option)
- Hi-mate (Remote Management System) (Option)
- Cab Suspension Mount
- Swing Lock System (Option)



*Photo may include optional equipment.

UP to 6%
More fuel-efficient in leveling
(Compared to 9S Series)

2%
Faster truck loading
(Compared to 9S Series)



*Photo may include optional equipment.

New Variable Power Control

The HX Series minimizes equipment input and output control signals to improve fuel efficiency. Its three-stage power mode ensures the highest performance in any operating environment.



* **P(power) mode** : Maximizes speed and power of the equipment for heavy load work.



* **S(standard) mode** : Optimizes performance and fuel efficiency of the equipment for general load work.



* **E(economy) mode** : Improves the control system for light load work.

WORK MAX, WORTH MAX

Fuel Efficient System, Allows Great Performance

The HX Series has an eco-friendly, high-performance engine which ensures both excellent fuel efficiency and high power. With outstanding operating performance proven by rigorous tests at various work sites, it will satisfy any customer's needs.

15% increased greater screen from 7 to 8 inch is applied in HX Series.
More functions and better resolution are available with adding premium options.



Fuel Rate Information



Attachment Flow Control (Option)

The HX Series improves pump flow rate by independent control of two pumps. It optimizes attachments for effective flow rate setting depending on attachments (ten breaker types and ten crusher types), enabling various operations matching the site environments.



Eco Gauge

Eco gauge enables economic operation of machines. The gauge level and color displays engine torque and fuel efficiency level. On top of that, the status of fuel consumption such as average rate and the total amount of fuel consumed is displayed. Hourly and daily based fuel consumption can be checked in the detailed menu as well.



New Cooling System with Increased Air Flow

With the three-layer stacked up cooling module improving air inflow, the HX Series provides excellent cooling performance by increasing heat dissipation.



Enlarged Air Inlet with Grill Cover

Enlarged vent hole of the air inlet side cover and fine net grill to prevent penetration of foreign materials further improve durability.

Cycle Time Improvement

The HX Series provides higher productivity on the site by faster operation: it loads trucks up to 2% faster and levels up to 6% faster than the 9S Series.

MORE RELIABLE, MORE SUSTAINABLE

New Exterior Design for Robustness and Safety

The true value of the HX Series lies in its durability. The robust frame structure and the attachments show the real value of the HX Series in tough working environments and promise higher productivity.



Chrome Coated Pins

Reinforced Pin, Bush, and Polymer Shim

The HX Series improves lubricity of connecting parts between the equipment and attachments. Gaps with attachments are minimized by wear-resistant long-life pins, bushes, and polymer shims, supporting the highest performance with invariable durability.

Wear Resistant Cover Plate

A wear-resistant cover plate is installed at the end of the arm to minimize abrasion on the connector between the arm and the bucket. Vibration reduction of buckets enables more stable operation even in high-load work.



Durable Cooling Module

The HX Series has a durable cooling module that passed stringent tests, demonstrating the highest productivity in tough working environments.



Reinforced Durability of Upper and Lower Structure and Attachments

The upper and lower structure and attachments of the HX Series have higher durability than demanded on the site, as proven through numerous tests including road tests and virtual simulation. The wear resistance of the bucket has been improved by use of new material.



Almost Doubled Durability of the Attachments for HX520S L

New boom and arm for HX520S L radically enhanced its durability in fields. Principal dimensions have been increased notably at critical section while their total weights were kept as usual by means of structural optimization. Completely new welding technique, which was developed to remove the back plate, also contributed a lot to the enhancement. The new attachments, in the end, have been proved to ensure at least 1.8 times longer life than those for 9-series.



Chrome Coated Pins

*Photo may include optional equipment.

Hi-grade (High-pressure) Hoses

The HX Series uses high-pressure hoses with improved heat and pressure resistance, greatly increasing the durability of the equipment.



Cabin space for drivers increased by
13%
(Compared to 9 Series)

310 mm
(9 Series)

340 mm
(HX Series)

*Photo may include optional equipment.

INFOTAINMENT FRONTIER

Improved Instrument Panel for Easier Monitoring

Many electronic functions are concentrated in the most convenient spot for operators to improve work efficiency. The highly-advanced infotainment system, a product of HCE's intensive information technology development, enables both productivity and comfort while working! The HX Series is designed with the operator in mind.



Intelligent and Wide Cluster

The 8-inch interactive touchscreen display of the HX Series is 15% larger than that of the previous model. The centralized switches on the display allow the operator to check the urea level and the temperature outside the cab.



Wi-Fi Direct with Smart Phone (Miracast) (Option)

The smart terminal-miracast system uses the Wi-fi from the operator's smart phone to easily and conveniently enable features of the smart phone, such as navigating, surfing the web, watching videos, and listening to music, on the 8" screen. (Currently only available for Android phones.)

New Air Conditioning System

Front side Air Vent holes make operators more convenient and fresh through direct air flow to driver's face, foot and body.



Front Side Air-Vent

Quick Coupler Button (Option)

Easy attachment replacement of equipment is available with quick coupler button.

New Audio System

The radio player with a USB-based MP3 player, an integrated Bluetooth hands-free feature, and a built-in microphone allow for phone calls while at work and in transit. The radio player is conveniently located on the right side of the operator to allow for improved access.



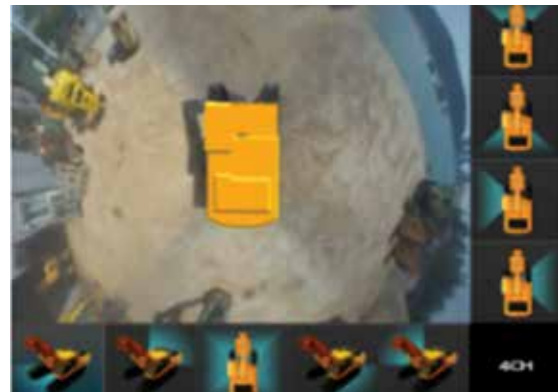
New Front Side Air-conditioning System

The ventilation is designed for both warm and cool air reaching to operators' faces. It could help operators create more neat and enjoyable atmosphere through indoor air circulation.

MODERN COMFORT, SIMPLE AND SAFE SOLUTION

New Cabin for More Comfort

Low noise, low vibration, and ergonomic design make the cabin space more comfortable and pleasant! With focus on safety and convenience of operators, the HX Series allows rapid and safe equipment inspection anytime and anywhere, providing an optimal environment for operators to work.



AAVM (Advanced Around View Monitoring) Camera System (Option)

The HX Series has a state-of-the-art AAVM video camera system to secure field of vision for operators in all directions, thereby preventing accidents. Operators can easily check the workplace in the front and rear and to the right and left.



*AVM (Around View Monitoring): Secure field of vision in all directions by nine views including 3D bird's eye view and 2D/4CH view.

*IMOD (Intelligent Moving Object Detection): Inform when people or dangerous objects are detected within the range of operation (Recognition distance: 5m).

HiMATE

It's Convenient, Easy and Valuable

Hi-mate Hyundai's newly developed remote management system, utilizes GPS-satellite technology to provide customers with the highest level of service and product support available. Hi-mate enables users to remotely evaluate machine performance, access diagnostic information, and verify machine locations at the touch of a button.

What is benefits



Increase Productivity

It helps you operate machines in efficient. You can check the difference between total engine hours and actual working hours. See how productive your machines are and plan any required cost saving solutions. Hi MATE offers working information such as working/idling hours, fuel consumption and rate.



Convenient and Easy Monitoring

There is nothing much to do to monitor your machines. Just log on to the Hi MATE website or mobile application. Hi MATE allows you to watch your machines whenever and wherever you are.



Security

Protect your machines from theft or unauthorized usage with Hi MATE. If the machine moves out of the Geo-fence boundary, you will get alerts.



*Photo may include optional equipment.

Cab Suspension Mount

With a low-vibration design by the coil spring and damper inside the mount, the cab suspension mount of the HX Series reduces noise inside the cabin and improves durability, providing a comfortable operation space that lessens operators' fatigue.

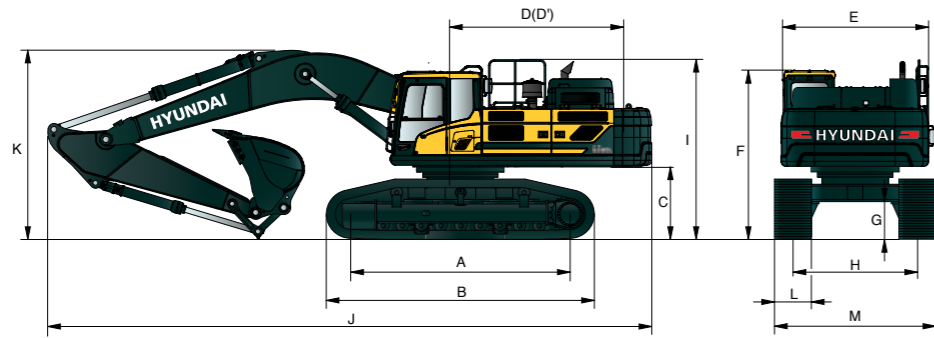
Swing Lock System (Option)

Swing lock system is provided to maintain stability when swing movement needs to be limited, improving operating speed and productivity.

DIMENSIONS & WORKING RANGE

HX520S L DIMENSIONS

6.55 m (21' 6"), 7.06 m (23' 2"), 9.0 m (29' 6") BOOM and 2.4 m (7' 10"), 2.9 m (9' 6"), 3.38 m (11' 1"), 4.0 m (13' 1"), 6.0 m (19' 8") ARM

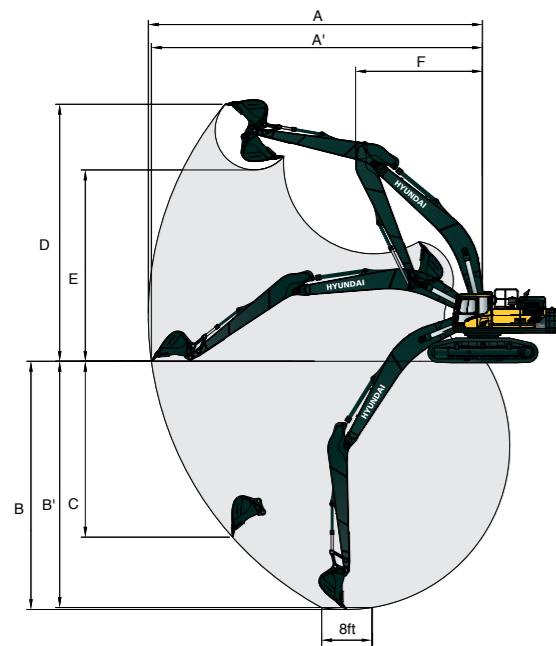


Unit : mm (ft · in)

A	Tumbler distance	4,470 (14' 8")
B	Overall length of crawler	5,460 (17' 11")
C	Ground clearance of counterweight	1,445 (4' 9")
D	Tail swing radius	3,720 (12' 2")
D'	Rear-end length	3,665 (12' 0")
E	Overall width of upperstructure	2,980 (9' 9")
F	Overall height of cab	3,190 (10' 6")
G	Min. ground clearance	770 (2' 6")
H	Track gauge	Extend 2,940 (9' 8")
		Retracted 2,380 (7' 10")
I	Overall height of guardrail (Opt)	3,595 (11' 8")

Boom length		6,550 (21' 6")		7,060 (23' 2")			
	Arm length	2,400 (7' 10")	2,900 (9' 6")	2,400 (7' 10")	2,900 (9' 6")	3,380 (11' 1")	4,000 (13' 1")
J	Overall length	11,780 (38' 8")	11,650 (38' 3")	12,290 (40' 4")	12,160 (39' 11")	12,040 (39' 6")	12,030 (39' 6")
	K	Overall height of boom	4,190 (13' 9")	4,080 (13' 5")	4,070 (13' 4")	3,920 (12' 10")	3,790 (12' 5")
L	Track shoe width	600 (24")		700 (28")		800 (32")	
M	Overall width	Extend 3,540 (11' 7")		3,640 (11' 11")		3,690 (12' 1")	
		Retracted 2,990 (9' 10")		3,080 (10' 1")		3,130 (10' 3")	

HX520S L WORKING RANGE



Unit : mm (ft · in)

Boom length		6,550 (21' 6")		7,060 (23' 2")			
	Arm length	2,400 (7' 10")	2,900 (9' 6")	2,400 (7' 10")	2,900 (9' 6")	3,380 (11' 1")	4,000 (13' 1")
A	Max. digging reach	10,650 (34' 11")	11,070 (36' 4")	11,200 (36' 9")	11,620 (38' 1")	12,040 (39' 6")	12,600 (41' 4")
A'	Max. digging reach on ground	10,390 (34' 1")	10,820 (35' 6")	10,950 (35' 11")	11,380 (37' 4")	11,810 (38' 9")	12,380 (40' 7")
B	Max. digging depth	6,270 (20' 7")	6,770 (22' 3")	6,630 (21' 9")	7,130 (23' 5")	7,610 (25' 0")	8,230 (27' 0")
B'	Max. digging depth (8' level)	6,090 (20' 0")	6,610 (21' 8")	6,460 (21' 2")	6,980 (22' 11")	7,470 (24' 6")	8,110 (26' 7")
C	Max. vertical wall digging depth	4,370 (14' 4")	5,420 (17' 9")	4,650 (15' 3")	5,660 (18' 7")	5,770 (18' 11")	6,320 (20' 9")
D	Max. digging height	10,320 (33' 10")	10,530 (34' 7")	10,860 (35' 8")	11,080 (36' 4")	11,180 (36' 8")	11,410 (37' 5")
E	Max. dumping height	7,000 (23' 0")	7,120 (23' 4")	7,490 (24' 7")	7,630 (25' 0")	7,780 (25' 6")	8,020 (26' 4")
F	Min. swing radius	4,730 (15' 6")	4,520 (14' 10")	5,110 (16' 9")	4,890 (16' 1")	4,770 (15' 8")	4,630 (15' 2")

LIFTING CAPACITY

Rating over-front Rating over-side or 360 degree

HX520S L

6.55 m (21' 6") boom, 2.40 m (7' 10") arm equipped with 600 mm (24") triple grouser shoe.

Load point height m (ft)	3.0m (9.8 ft)		4.5m (14.8 ft)		6.0m (19.7 ft)		7.5m (24.6 ft)		At max. reach			
									Capacity	Reach		
7.5 m (24.6 ft)	kg				*13,500	*13,500			*12,940	*12,940	7.02	
	lb				*29,760	*29,760			*28,530	*28,530	(23.0)	
6.0 m (19.7 ft)	kg				*14,310	*14,310	*12,670	11,900	*12,420	10,870	7.93	
	lb				*31,550	*31,550	*27,930	26,230	*27,380	23,960	(26.0)	
4.5 m (14.8 ft)	kg				*15,780	*15,780	*13,210	11,590	*12,210	9,610	8.47	
	lbT				*34,790	*34,790	*29,120	25,550	*26,920	21,190	(27.8)	
3.0 m (9.8 ft)	kg				*17,270	15,400	*13,870	11,220	*12,150	9,000	8.72	
	lb				*38,070	33,950	*30,580	24,740	*26,790	19,840	(28.6)	
1.5 m (4.9 ft)	kg				*18,080	14,840	*14,270	10,900	*12,150	8,860	8.71	
	lb				*39,860	32,720	*31,460	24,030	*26,790	19,530	(28.6)	
Ground Line	kg				*17,900	14,570	*14,080	10,720	*12,130	9,180	8.43	
	lb				*39,460	32,120	*31,040	23,630	*26,740	20,240	(27.7)	
-1.5 m (-4.9 ft)	kg					*20,970	*20,970	*16,600	14,550	*11,950	10,110	7.86
	lb					*46,230	*46,230	*36,600	32,080	*26,350	22,290	(25.8)
-3.0 m (-9.8 ft)	kg	*19,550	*19,550		*17,320	*17,320	*13,780	*13,780		*11,270	*11,270	6.91
	lb	*43,100	*43,100		*38,180	*38,180	*30,380	*30,380		*24,850	*24,850	(22.7)

6.55 m (21' 6") boom, 2.90 m (9' 6") arm equipped with 600 mm (24") triple grouser shoe.

Load point height m (ft)	3.0m (9.8 ft)		4.5m (14.8 ft)		6.0m (19.7 ft)		7.5m (24.6 ft)		9.0m (29.5 ft)		At max. reach					
											Capacity	Reach				
9.0 m (29.5 ft)	kg										*11,180	*11,180	6.21			
	lb										*24,650	*24,650	(20.4)			
7.5 m (24.6 ft)	kg						*10,730	*10,730			*10,420	*10,420	7.53			
	lb						*23,660	*23,660			*22,970	*22,970	(24.7)			
6.0 m (19.7 ft)	kg					*13,460	*13,460	*11,970	*11,970		*10,250	9,990	8.38			
	lb					*29,670	*29,670	*26,390	*26,390		*22,600	22,020	(27.5)			
4.5 m (14.8 ft)	kg					*19,620	*19,620	*15,010	*15,010	*12,640	11,650	*10,460	8,910	8.90		
	lb					*43,250	*43,250	*33,090	*33,090	*27,870	25,680	*23,060	19,640	(29.2)		
3.0 m (9.8 ft)	kg							*16,650	15,510	*13,440	11,230	*11,510	8,570	9.14		
	lb							*36,710	34,190	*29,630	24,760	*25,380	18,890	*24,290	18,450	(30.0)
1.5 m (4.9 ft)	kg							*17,750	14,860	*14,010	10,860	*11,610	8,390	*11,430	8,230	9.13
	lb							*39,130	32,760	*30,890	23,940	*25,600	18,500	*25,200	18,140	(29.9)
Ground Line	kg							*23,890	22,240	*17,910	14,490	*14,080	10,620	*11,490	8,470	8.86
	lb							*52,670	49,030	*39,480	31,940	*31,040	23,410	*25,330	18,670	(29.1)
-1.5 m (-4.9 ft)	kg	*19,060	*19,060			*22,030	*22,030	*17,020	14,390	*13,310	10,560			*11,470	9,220	8.32
	lb	*42,020	*42,020			*48,570	*48,570	*37,520	31,720	*29,340	23,280			*25,290	20,330	(27.3)
-3.0 m (-9.8 ft)	kg	*23,080	*23,080			*18,850	*18,850	*14,790	14,530					*11,130	10,860	7.43
	lb	*50,880	*50,880			*41,560	*41,560	*32,610	32,030					*24,540	23,940	(24.4)
-4.5 m (-14.8 ft)	kg							*13,500	*13,500	*9,960	*9,960			*9,800	*9,800	6.05
	lb							*29,760	*29,760	*21,960	*21,960			*21,610	*21,610	(19.9)

- Lifting capacity is based on ISO 10567.
- Lifting capacity of the Robex Series does not exceed 75% of tipping load with the machine on firm, level ground or 87% of full hydraulic capacity.
- The Lift-point is bucket pivot mounting pin on the arm (without bucket mass).
- (*) indicates the load limited by hydraulic capacity.

MEMO